

Square Light

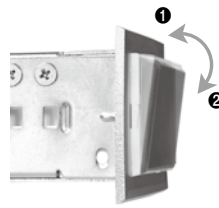
SL Series

Part Number Description

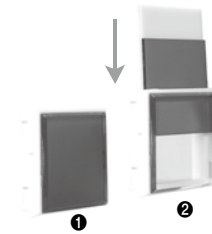
SL^① - ^② ^③ ^④

① Type	30 : Square (30 X 30)	40 : Rectangular (40X30)			
② Assembly*	111 ~ FF (ROW X LINE)				
③ Color	R : Red	G : Green	Y : Yellow	B : Blue	W : White
④ Voltage	24 VDC	110/125 VDC	110 VAC	220 VAC	

* This is produced according to custom order. So that it is recommended to order with actual drawing data.



Two Position angle control



Easy lens and dial replacement

General Specification

Model	SL 30 (Square Type)	SL 40 (Rectangular Type)		
LED unit size	30 X 30	30 X 40		
Illuminated	LED			
Power consumption	Max. 20mA			
Rated Voltage	24VDC			
	110/125VDC			
	110VAC (with AC Power Trans)			
	220VAC (with AC Power Trans)			
Color	Red, Green, Yellow, Blue, White			
Insulation resistance	100MΩ(500VDC)			
Dielectric Strength	Terminal & Non Charged Metal Part : 1500VAC			
Ambient temperature	-25 ~ 70 °C (With no icing)			
Material	Body : PC	Lens : Acrylic	Screen : Noril	
Terminal Bolt	M3.5 X 7			
Maximum ass'y size	Row	20	20	
	Line	20	20	

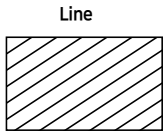
※ TEST terminal is not apply for AC110V, 220V

※ Additional circuit cannot be used at X1 terminal when using TEST terminal.(Remove voltage occurrence when TEST lamp)

Dimension (Panel Cut Out & Name Plate)

Unit : mm

Panel Cut Out



Category

Line

SL30

SL40

30xn+6

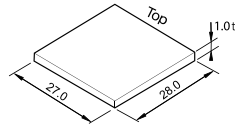
40xn+6

Row

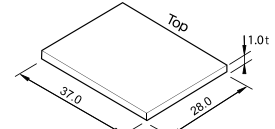
30xn+6

30xn+6

Name Plate



SL30

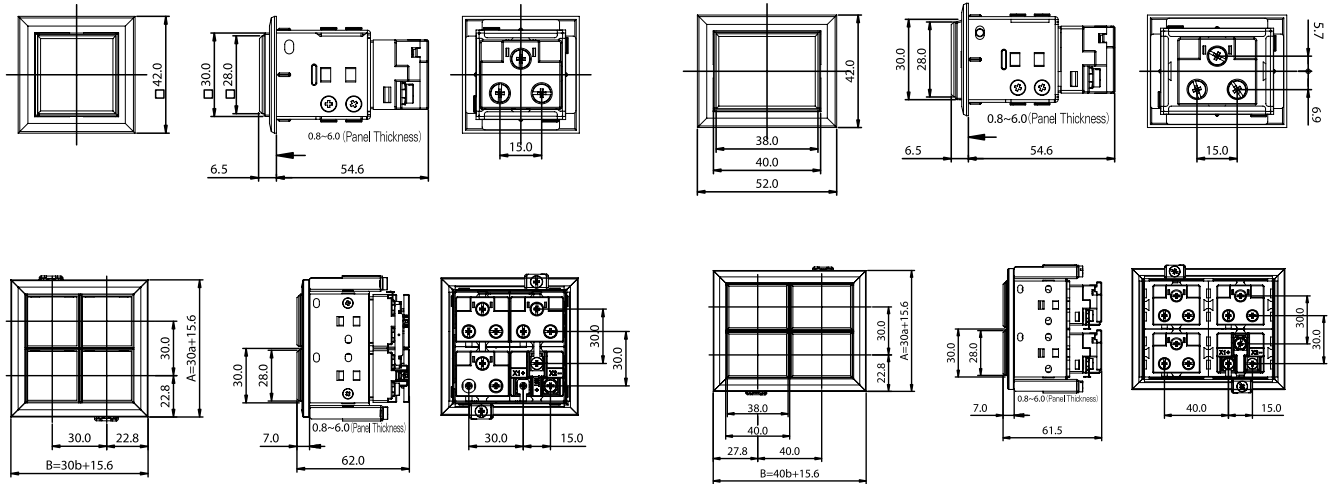


SL40

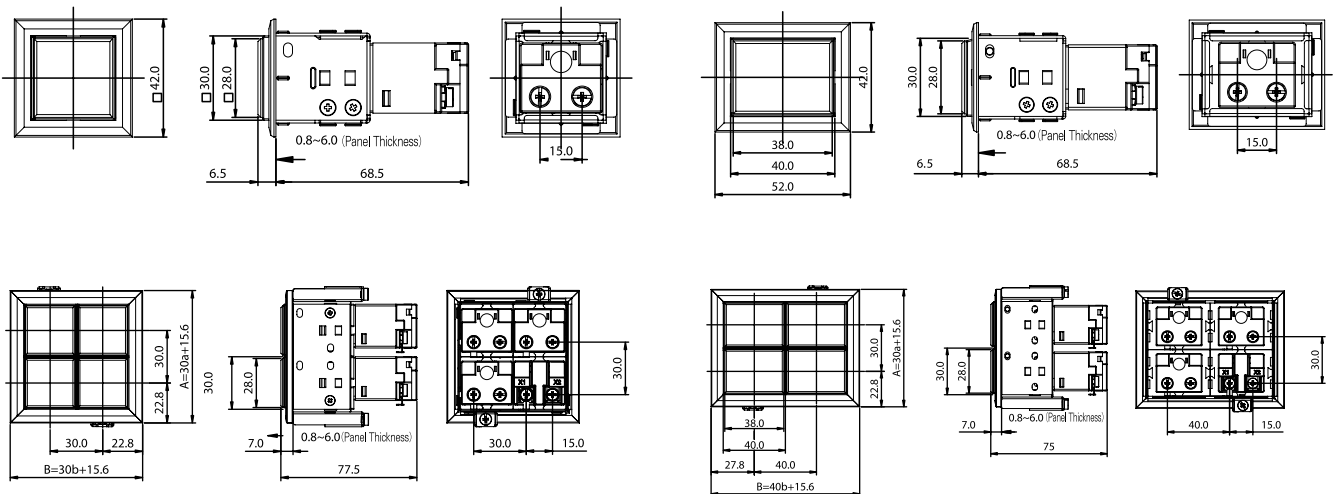
Dimension

Unit : mm

DC Type





AC Type



Square Light

SL Series

Product Selection

Bezel type	size	Color	Part Number	Rated Voltage
	30 X 30 (mm)	Red	SL30-111R	
		Green	SL30-111G	24VDC
		Yellow	SL30-111Y	110/125VDC
		Blue	SL30-111B	110VAC
		White	SL30-111W	220VAC
	30 X 40 (mm)	Red	SL40-111R	
		Green	SL40-111G	24VDC
		Yellow	SL40-111Y	110/125VDC
		Blue	SL40-111B	110VAC
		White	SL40-111W	220VAC